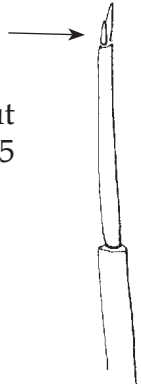
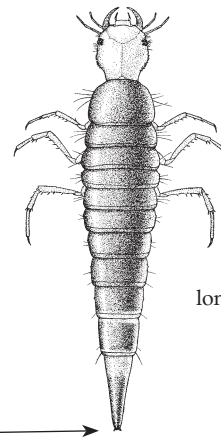


24(23') Last antennal segment double, although lesser lobe may be only a stout seta arising from the apex of 3rd antennal segment 25



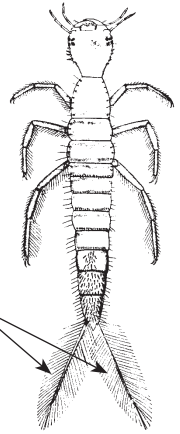
24' Last antennal segment simple 27

25(24) Cerci rudimentary *Agabetes*



Agabetes

25' Cerci subequal to or longer than last segment 26

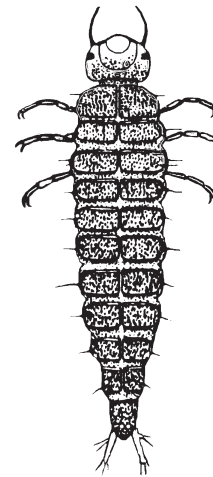


Laccophilus

rudimentary cerci →

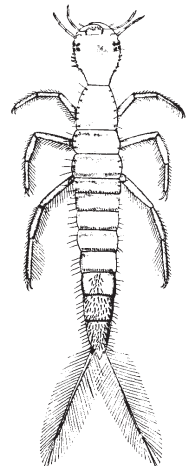
long cerci →

26(25') Cerci subequal to last segment; inner margin of mandible serrate *Copelatus*



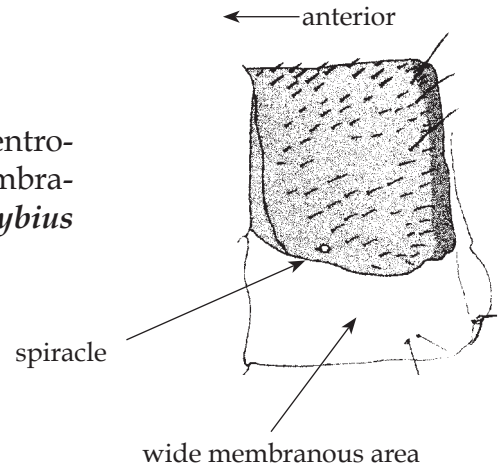
Copelatus

26' Cerci longer than last segment; inner margin of mandible smooth *Laccophilus*

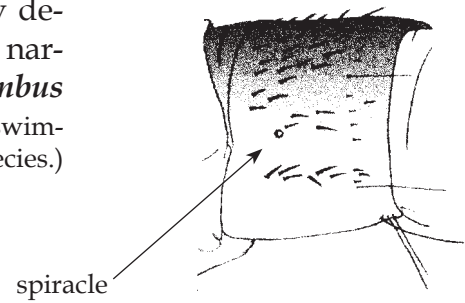


Laccophilus

27(24') Spiracle of 6th abdominal segment near well defined ventrolateral margin of dorsal plate; segment with extensive membranous area *Ilybius*



27' Spiracle of 6th abdominal segment distant from weakly defined ventrolateral margin of dorsal plate; segment with narrow membranous area *Agabus/Platambus*
 (larvae of *Agabus* may be separable from *Platambus* by the lack of swimming setae on the legs of *Platambus*, which are present in *Agabus* species.)



(figures above adapted from Barman et al. 2001)